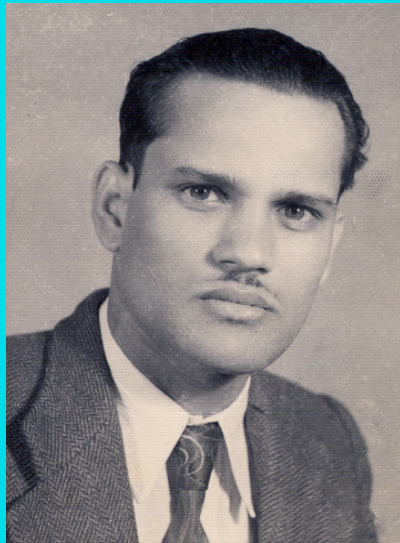


Thank you to the Asthana Family Alzheimer's Disease Memorial Fund for supporting the Alzheimer's Disease & Related Disorders Research Day Poster Session. Dr. Sanjay Asthana created this fund in honor of his father.



Madan Mohan Sahai Asthana

About the Wisconsin ADRC

The Wisconsin Alzheimer's Disease Research Center (ADRC) combines academic, clinical, and research expertise from the University of Wisconsin School of Medicine and Public Health and the Geriatric Research, Education and Clinical Center (GRECC) of the William S. Middleton Memorial Veterans Hospital in Madison, Wisconsin. Founded in 2009, the ADRC receives funding from private, university, state, and national sources, including a National Institutes of Health/National Institute on Aging grant for Alzheimer's Research Centers (P50-AG033514).

www.adrc.wisc.edu | adrc@medicine.wisc.edu



**Wisconsin Alzheimer's
Disease Research Center**
UNIVERSITY OF WISCONSIN
SCHOOL OF MEDICINE AND PUBLIC HEALTH



The Wisconsin Alzheimer's Disease Research Center presents

Alzheimer's Disease & Related Disorders Research Day

Friday, March 23, 2018 | Discovery Building

PROGRAM & AGENDA



**Wisconsin Alzheimer's
Disease Research Center**
UNIVERSITY OF WISCONSIN
SCHOOL OF MEDICINE AND PUBLIC HEALTH



WISCONSIN
GERIATRIC
EDUCATION
CENTER

This event is presented by the Wisconsin Alzheimer's Disease Research Center, with generous support from the Wisconsin Geriatric Education Center.

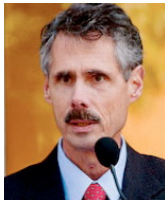
SPEAKERS



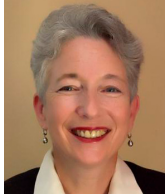
Sanjay Asthana, MD, Duncan G. and Lottie H. Ballantine Chair in Geriatrics, is associate dean for gerontology and head of the Division of Geriatrics at Gerontology at the UW School of Medicine and Public Health. Dr. Asthana also serves as director of the Wisconsin Alzheimer's Disease Research Center and the Madison VA Geriatric Research, Education, and Clinical Center.



John Denu, PhD, is professor of biomolecular chemistry at UW-Madison and epigenetics theme leader at Wisconsin Institute for Discovery. He investigates the mechanisms and biological function of reversible protein modifications involved in modulating signal transduction, chromatin dynamics, and metabolism.



Howard Federoff, MD, PhD, is professor of neurology at University of California, Irvine, and former Vice Chancellor, Health Affairs and CEO, UCI Health System, a dual role that ensured the alignment of the university's clinical, academic, and research missions. As a researcher, he discovered and validated a predictive blood test for those at risk for Alzheimer's disease.



Dorothy Farrar-Edwards, PhD, is professor of kinesiology and medicine at UW-Madison, director of the UW Collaborative Center for Health Equity, and serves as a core leader in the Wisconsin Alzheimer's Disease Research Center. She conducts multidisciplinary research that addresses the effects of aging on functional independence and quality of life.



Robert Golden, MD, became the ninth dean of the UW School of Medicine and Public Health in July 2006. He serves as chair of the Board of UW Health, the university's academic health system, and also holds an appointment as a professor in the Department of Psychiatry. Dr. Golden's research interests focus on the biology and pharmacology of mood disorders.

Andrew Merluzzi, BA, is a doctoral student in the Neuroscience and Public Policy Program and a trainee with Dr. Barbara Bendlin in the Wisconsin Alzheimer's Disease Research Center.

Jichao Sun, PhD, is a postdoctoral fellow in the UW Department of Pathology and Laboratory Medicine. His research focuses on studying the mechanistic aspects of Alzheimer's disease (AD), which may provide new therapy ideas.

Jeffrey Zemla, PhD, is an assistant scientist in the UW Department of Psychology. He studies semantic memory and Alzheimer's disease.

AGENDA

PM

1:00 – **Opening Remarks and Research Update**

Sanjay Asthana, MD

Robert Golden, MD

1:20 – **“Plasma Metabolomic Profiles and Cognitive Function: Implications for Dementia”**

Howard Federoff, MD, PhD

2:20 – **Abstract Presentations**

“Alzheimer's Disease Biomarkers Are Associated with Altered White Matter Microstructure”

Andrew Merluzzi, BA

“A CRISPR/Cas9 Based Strategy to Attenuate the Beta-Amyloid Pathway”

Jichao Sun, PhD

“Modeling Semantic Fluency Data in Alzheimer's Patients”

Jeffrey Zemla, PhD

2:50 – **Break**

3:05 – **“Metabolic and Epigenetic Alterations During Aging”**

John M. Denu, PhD

3:50 – **Remarks and Reception Invitation**

Dorothy Farrar-Edwards, PhD

4:00 – **Poster Viewing and Reception in the Open Court**

Please join us for appetizers and beverages in the Open Court during the poster reception. We encourage you to interact with presenters and meet new collaborators from across campus.

5:15 – **Presentation of Poster Awards**

5:30 – **Close of Event**