

The Wisconsin Alzheimer's Disease Research Center presents

Alzheimer's Disease & Related Disorders Research Day



Friday, March 1, 2019 | Discovery Building

PROGRAM & AGENDA



**Wisconsin Alzheimer's
Disease Research Center**
UNIVERSITY OF WISCONSIN
SCHOOL OF MEDICINE AND PUBLIC HEALTH



WISCONSIN
GERIATRIC
EDUCATION
CENTER

*This event is presented by the Wisconsin Alzheimer's Disease Research Center,
with generous support from the Wisconsin Geriatric Education Center.*

AGENDA

PM

1:00 — Opening Remarks and Research Update

*Robert Golden, MD
Sterling Johnson, PhD*

1:20 — “Dementia and Brain Health: Looking Back to Move Forward”

Rachel Whitmer, PhD

2:20 — Abstract Presentations, 10 minutes each

“Socioeconomic Status and Brain Health:
The CARDIA Study”
Ryan Dougherty, BS

“Baseline Dispersion Intra-Individual Cognitive Variability in
a Young Pre-Clinical Cohort”
John O’Hara, MA

“Subjective Memory Complaints Associated with
Discrimination in Healthcare Settings among
Transgender and Gender Non-conforming Older Adults”
Nickolas Lambrou, PhD

2:50 — Break

**3:05 — “Leveraging Research to Address Social Disadvantage:
A Focus on Aging and Dementia”**

Amy J. Kind, MD, PhD

3:50 — Remarks and Reception Invitation

*Dorothy Farrar-Edwards, PhD
Sanjay Asthana, MD*

4:00 — Poster Viewing and Reception in the Open Court

*Please join us for appetizers and beverages in the Open Court
during the poster reception. We encourage you to interact with
presenters and meet new collaborators from across campus.*

5:15 — Presentation of Poster Awards

5:30 — Close of Event

SPEAKERS



Sanjay Asthana, MD, Duncan G. and Lottie H. Ballantine Chair in Geriatrics, is associate dean for gerontology and head of the Division of Geriatrics and Gerontology at the UW School of Medicine and Public Health. Dr. Asthana also serves as director of the Wisconsin Alzheimer's Disease Research Center and the Madison VA GRECC.



Dorothy Farrar-Edwards, PhD, is professor of kinesiology and medicine at UW-Madison, director of the UW Collaborative Center for Health Equity, and serves as a core leader in the Wisconsin Alzheimer's Disease Research Center. She conducts multidisciplinary research that addresses the effects of aging on functional independence and quality of life.



Robert Golden, MD, became the ninth dean of the UW School of Medicine and Public Health in July 2006. He serves as chair of the Board of UW Health, the university's academic health system, and also holds an appointment as a professor in the Department of Psychiatry. Dr. Golden's research interests focus on the biology and pharmacology of mood disorders.



Sterling Johnson, PhD, is a clinical neuropsychologist with research interests in brain function in Alzheimer's disease and related disorders. Dr. Johnson serves as associate director and Imaging Core leader for the Wisconsin Alzheimer's Disease Research Center. He also holds an NIH R01 as PI of the Wisconsin Registry for Alzheimer's Prevention (WRAP).



Amy J. Kind, MD, PhD, is associate professor of medicine and director of the Health Services and Care Research Program in the UW Department of Medicine. Dr. Kind is a national leader in the field of neighborhood-level socioeconomic contextual disparities, especially as they relate to brain health and Medicare policy.



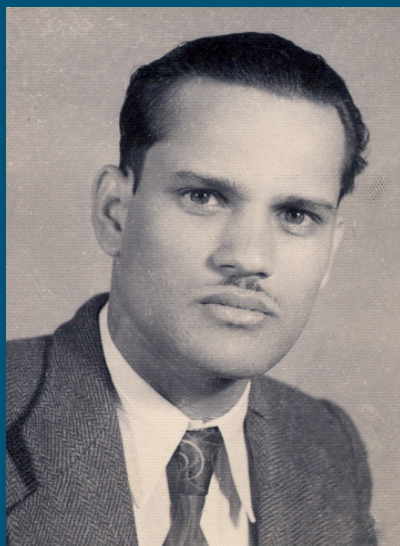
Rachel Whitmer, PhD, is professor of epidemiology and leads the Population Science of Brain Health Laboratory at the University of California, Davis. Her research focuses on using epidemiological methods to reduce inequities in brain aging. She serves as PI of the US POINTER Northern California site and holds a leadership role in the IDEAS study.

Ryan Dougherty, BS, is a doctoral student in the Department of Kinesiology and a trainee with Dr. Dane Cook (kinesiology) and Dr. Ozioma Okonkwo in the Wisconsin Alzheimer's Disease Research Center.

John O'Hara, MA, is a clinical psychology doctoral candidate at Midwestern University in Downers Grove, Illinois. He is presently completing his pre-doctoral internship in the Geriatric Track of the William S. Middleton Memorial Veterans Hospital Psychology Internship Program.

Nickolas Lambrou, PhD, is an advanced postdoctoral fellow with the Madison VA Geriatric Research Education and Clinical Center (GRECC), where he studies under the mentorship of Carey E. Gleason, PhD. His research endeavors address relationships between stress and coping, health disparities, and cognition in aging and underserved populations.

Thank you to the
Asthana Family
Alzheimer's Disease
Memorial Fund
for supporting the
Alzheimer's Disease &
Related Disorders
Research Day
Poster Session.
Dr. Sanjay Asthana
created this fund in
honor of his father.



Madan Mohan Sahai Asthana

About the Wisconsin ADRC

The Wisconsin Alzheimer's Disease Research Center (ADRC) combines academic, clinical, and research expertise from the University of Wisconsin School of Medicine and Public Health and the Geriatric Research, Education and Clinical Center (GRECC) of the William S. Middleton Memorial Veterans Hospital in Madison, Wisconsin. Founded in 2009, the ADRC receives funding from private, university, state, and national sources, including a National Institutes of Health/National Institute on Aging grant for Alzheimer's Research Centers (P50-AG033514).

www.adrc.wisc.edu | adrc@medicine.wisc.edu



**Wisconsin Alzheimer's
Disease Research Center**

UNIVERSITY OF WISCONSIN
SCHOOL OF MEDICINE AND PUBLIC HEALTH